

If you have **MEASLES** symptoms



fever

and



cough or
runny nose

and



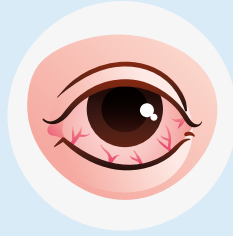
rash

or



fever

and



conjunctivitis

and



rash

or

if you have **been exposed to measles**
in the last three weeks:



Disinfect your hands,
put on a **procedure mask**, and
go directly to intake or triage
WITHOUT taking a seat in the waiting room.

